

GIORGIO GRAESAN  
and Friends





G1 - 2000/5 + 0,750 Colore  
G2 - 2000/5 + 0,250 Colore  
G3 - 2000/5 + 0,062 Colore  
G4 - 2000/5 + 0,020 Colore

Preparazioni:  
Pennello: Primus Sabbia  
Guanto: Primus Sabbia  
Rullo: Primus Naturale

Il video applicativo è disponibile nell'apposito **DVD** o su  
**[www.giorgiograesan.it/video/gioia](http://www.giorgiograesan.it/video/gioia)**

I segni delle pennellate sono evidenziati dalla illuminazione con luce radente.



Gioia 2000



Gioia 2000 / 1016



Gioia 2000 / 1018



GE

GG

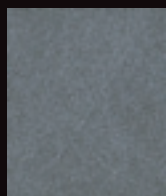
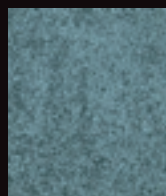
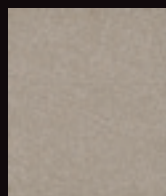
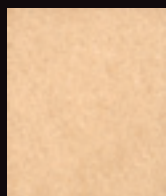
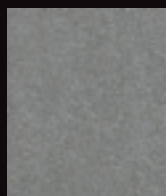
GF

GD

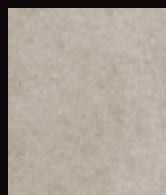
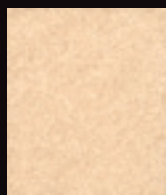
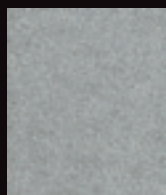
GB

GA

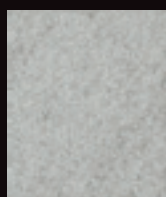
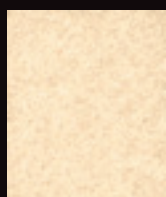
GC



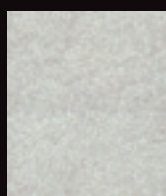
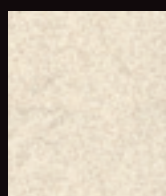
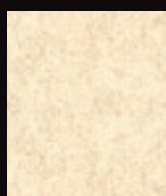
G1



G2



G3



G4

Colori indicativi - Suggested colours - Couleurs indicatives - Hinweisende Farben - Colores sugerencias - Χρώματα προτάσεις.

KB

KA

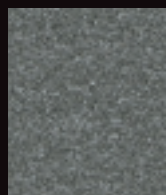
KF

KC

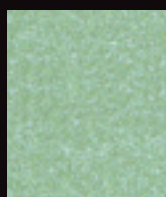
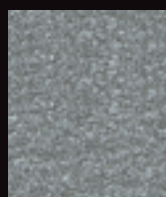
KD

KG

KE



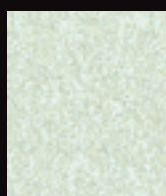
G1



G2



G3



G4

ZA

ZB

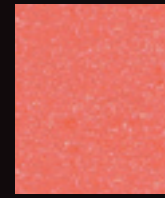
ZC

ZD

ZE

ZF

ZG



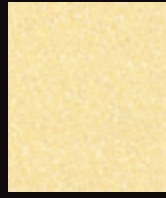
G1



G2



G3



G4

AR

AA

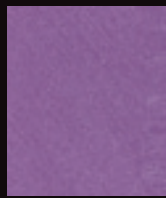
AL

AM

AF

AV

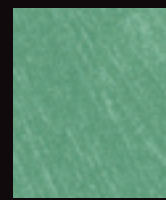
AZ



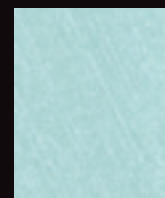
G1



G2



G3



G4



NA

NB

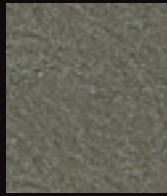
NS

NL

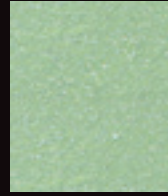
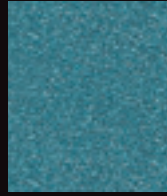
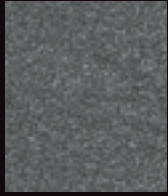
NR

NO

NY



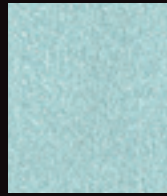
G1



G2



G3



G4

SC

SB

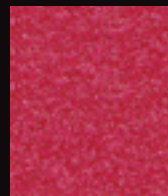
SD

SE

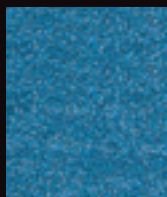
SA

SV

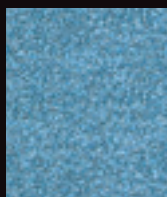
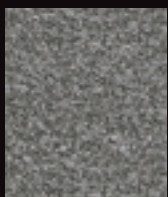
SG



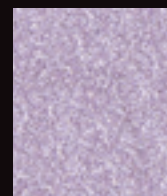
G1



G2



G3



G4

# GIORGIO GRAESAN

and Friends

**Colore & Gioia** è un prodotto perlescente disponibile in 169 tonalità.

Composto di scaglie di madreperla argento,  
illumina le tue pareti di riflessi iridescenti.

Si stende in due passaggi di prodotto applicabili con un apposito pennello,  
a guanto o rullo, dopo la preparazione della parete  
con il nostro PRIMUS SABBIA.

Totalmente lavabile con saponi non aggressivi, è un materiale non infiammabile.



1. Applicazione Primus Sabbia



2. Colorare il prodotto se necessario



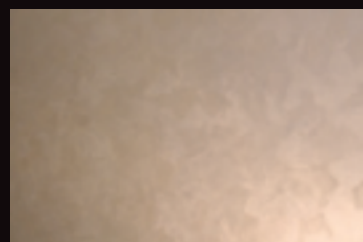
3. Miscelare Gioia



4. Prima mano



5. Seconda mano



6. Lasciare asciugare

<b>CONSUMI:</b>	7/8 mq al litro
<b>ESSICCAZIONE:</b>	dalle 6 alle 8 ore
<b>CONFEZIONI:</b>	da 1, 2,5, 5 e 15 litri
<b>PESO SPECIFICO:</b>	1,10 kg/litro circa
<b>CONTENUTO VOC:</b>	meno di 33 g/l